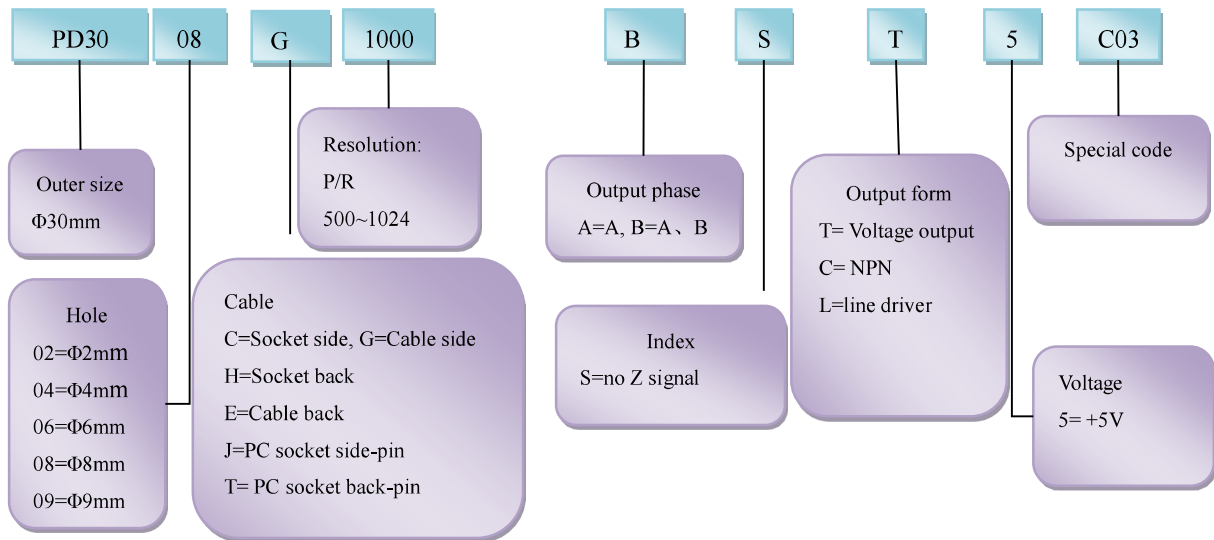


Incremental encoder-----PD30 series

Application:

Matrix reading, with high impact resistance, strength capability to error correction high reliability, and installation sizes small, wide range of resolution, do not require the signal conditioning. Assembly requirements are less, and has compensation ability of motor shaft radial and axial shifting, widely used in the DC motor, with a multi-aperture for selection.

Model



Electrical spec:

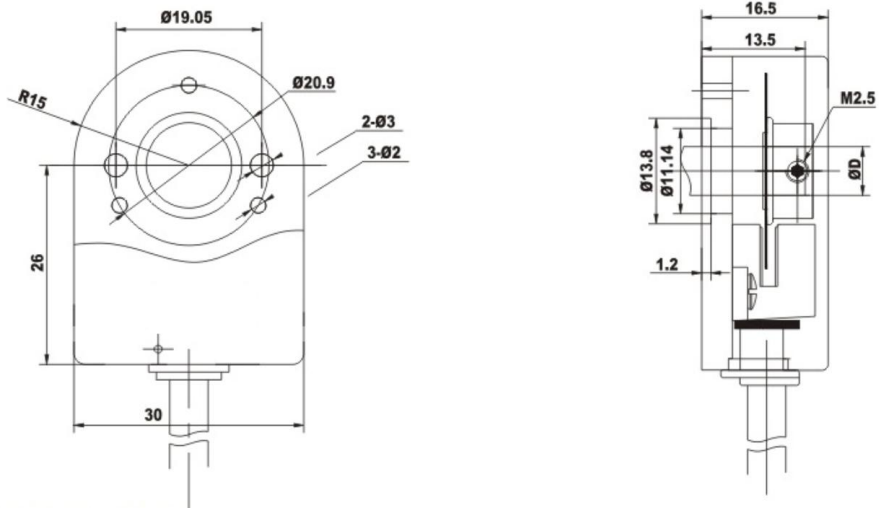
voltage	Output signal		Current consumption	Output waveform	Rise time Tr	Fall time Tf	Response frequency	Insulation Resistance
5V 7-12V	High level ≥85%Vcc	Low level ≤0.3	<65mA no-load	Square	200ns	50ns	0-10kHz	>100Ω

Mechanical spec:

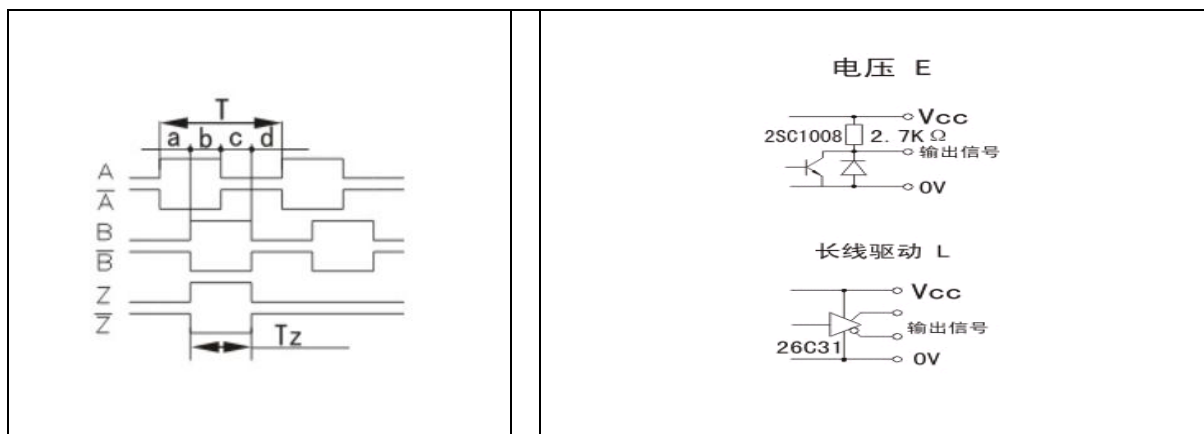
Max speed r/min	Starting torque	Axis maximum load	Impact	Anti-vibration
12000	<0.05Nm	Radial 25 N Axial 15N	50G/11ms	10G 10-2000Hz
Moment inertia	Work Temperature	Storage Temperature	Protection Degree	Weight
4 x 10 ⁻⁸ kgm ²	-40~85°C	-40~85°C	IP50	50g

PD30 Series

Dimensions :



Output phase shift



Connections:

Shielded cable wiring definition						
Signal	A	A/	B	B/	Vcc	0V
L circuits	Green	Brown	White	Grey	Red	Black
T/C circuits	Green		White		Red	Black